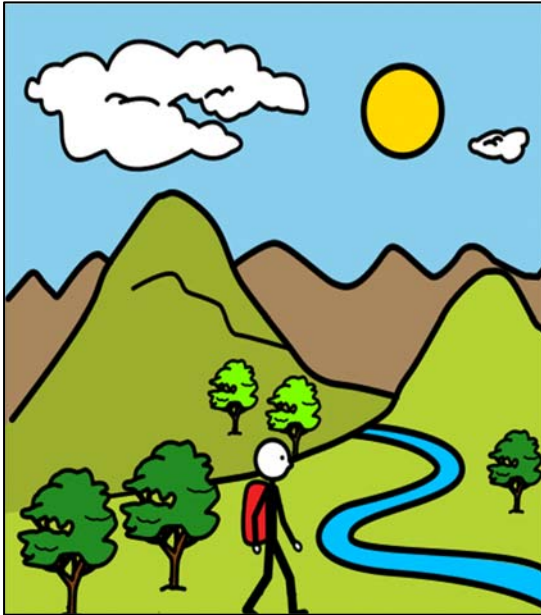




## Getting Lost In The Countryside



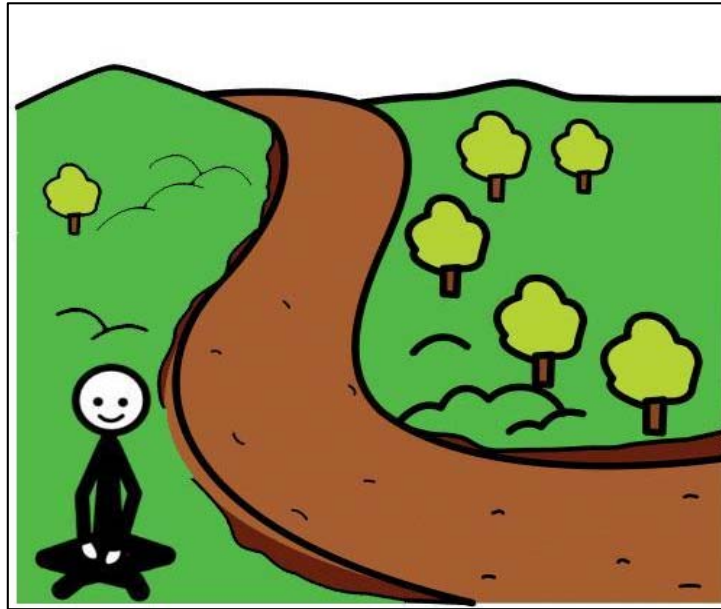
**To try to avoid to get lost, it is very important to have all what I need:  
personal ID, phone, water and money.**



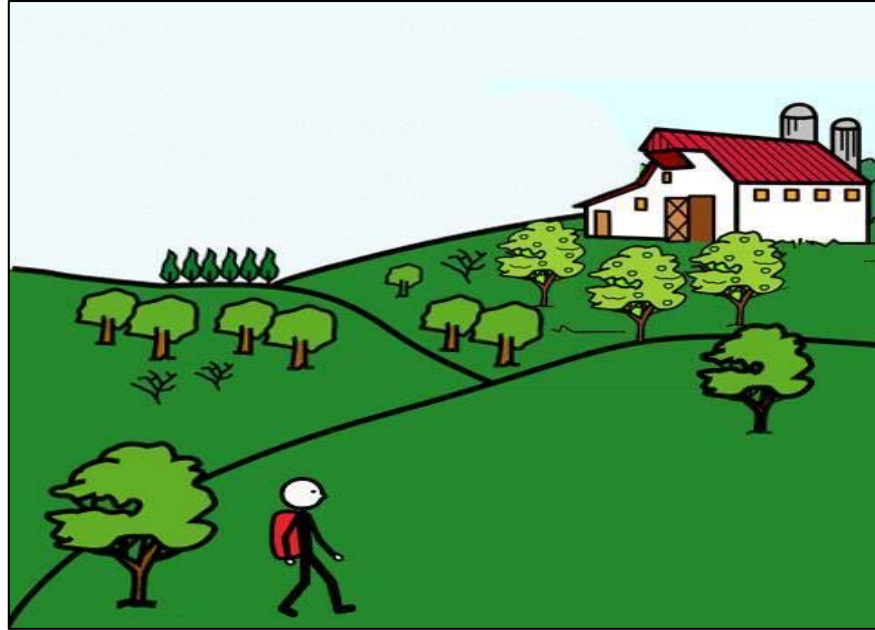
**If I get lost in the countryside, I can look around for familiar people or familiar places and go there.**



**If I see a person, in particular an official in uniform (a policeman, a firefighter), I can ask them for help.**



**If I see a road, I can stay by the side of the road and wait until someone comes and finds me.**



**If I see a settlement or a house, I can walk that way.**



**I stay away from places like irrigation canals, sewers, streams, rivers, well and waste water.**



**I stay away from animals.**





I LEARN AND GET BEYOND MY LIMITS  
ÖĞRENİYORUM VE SINIRLARIMI AŞIYORUM



It is supported by the European Commission under the Erasmus+ Programme. However, the European Commission and the Turkish National Agency cannot be held responsible for the views contained herein.



The pictographic symbols used are the property of the Government of Aragón and have been created by Sergio Palao for [ARASAAC](http://www.arasaac.org) (<http://www.arasaac.org>), that distributes them under [Creative Commons License BY-NC-SA](https://creativecommons.org/licenses/by-nc-sa/4.0/).

\*Some of the pictographic symbols are used as it is and some of them have been modified based on the context.